

# 150 Amp, 4 Line, Tempest

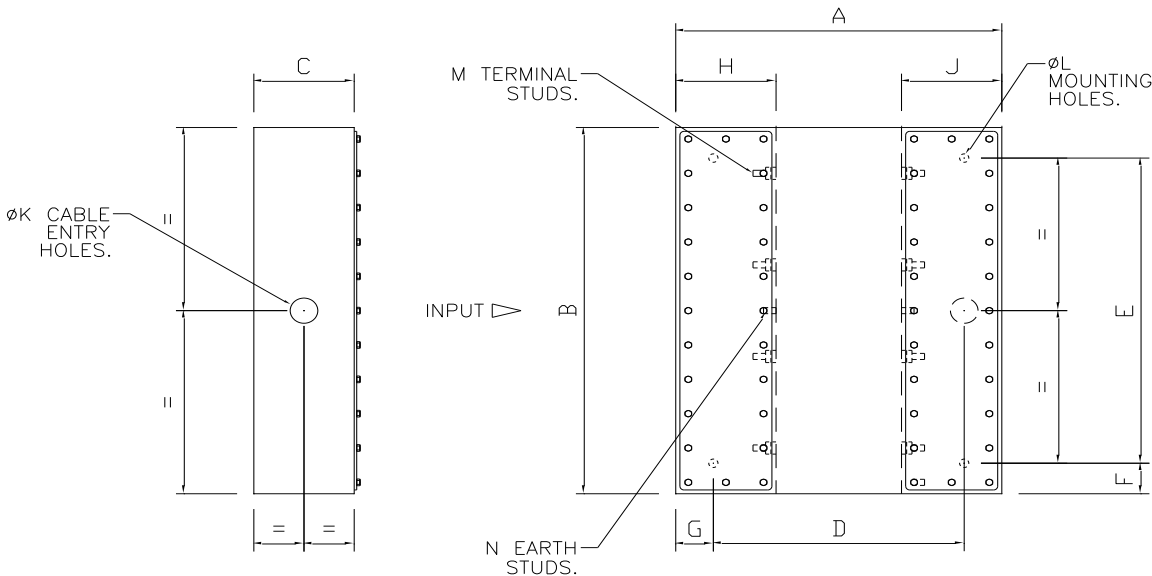
## Power Filter Standard Specification



Filter:	150 Amp, 4 line, 415VL-L, 50/60Hz TEMPEST Passive EMI Filters
Part Number:	EEPF-150-4-PL-TP
TEMPEST Performance:	Shielding effectiveness performance designed in accordance with requirements of 60 and 100dB from 100kHz - 1GHz available as standard offerings. Tailored performance requirements to 40GHz available on request.
Configuration:	“C”. In line input/rear output. Other configurations available upon request.
Mass:	50kg (approximately)

### Outline, Dimensions (mm) and Mechanical Details:

A	B	C	D	E	F	G	H	J	K	L	M	N
1200	560	180	1100	520	20	50	200	200	52	11	M12	M12



Masking:	Rear stainless-steel finish. Input piercing masked to 60mm.
----------	---

# 150 Amp, 4 Line, Tempest

## Power Filter Standard Specification

Colour:	RAL 9016 Traffic White, full gloss. Other colours and textures can be accommodated upon request.
Labelling:	Sticky backed industrial vinyl (logo labelling with serial numbering and ratings). Earthing, termination phase markers and input/output labels are to be fitted as standard.
Terminations:	Brass to BS EN 12164, CW614N/CZ121 standards.
Testing & Certification:	A general electrical safety certificate will be issued per unit/batch. This includes an Insertion Loss Test Certificate to 4GHz as standard.

EEP Filters design and manufacture a complete range of 2-Line/SP&N and 4-Line/TP&N TEMPEST power line filters. The standard range is 16A, 32A, 63A, 100A, 250A and 400A supporting facility compliance with the requirements of NATO standard SDIP-29, and equipment compliance with SDIP-27. Bespoke modular designs are available to service high power cable entries to large buildings up to 1600A and higher. The insertion loss performance of the extended range will meet the requirements needed for mounting to Faraday cage installations, and be compliant with the most stringent GCHQ and NSA TEMPEST standards.

The circuit designs of the filters are individual discrete lines for full performance in both common and differential modes. The performance is maintained under all current loading conditions across the full frequency spectrum, and the discrete line construction makes the filters fully electrically versatile in respect of connecting to the power supply. The mechanical design of the filters allows them to be installed either outside or inside of a TEMPEST protected zone. Low earth leakage designs are also available, and the filters may be supplied fitted with surge arrestors for circuits also protecting against the effects of EMP/HEMP, IEMI and secondary lightning.

### About Us

Established in 1996, European EMC Products (EEP) are an established British company whose experience and understanding of the science of shielding makes it an ideal partner in whom you can place your trust with confidence. The purpose of installing EEP shielding systems is to protect people and equipment against the threats posed by electromagnetic and radio frequency (RF) interference, radiation, magnetic fields and electromagnetic pulses. Our diverse range of turnkey products and services, including design, project management, testing and consultancy are delivered across multiple sectors to an international client base.

### Quality

European EMC Products Limited are registered to BS EN ISO 9001:2015, Certificate Number FS38901.  
Registered Scope: The design, assembly, installation, servicing and testing of RF Shielded Structures and equipment including EMI Shielding, Blast Doors, Gas Tight Doors and specialised mobile Electromagnetic Pulse Protection (EMPP) containers.  
Radio Frequency, Magnetic Shielding and Quench systems for MRI (Magnetic Resonance Imaging) scanners.  
The design, assembly and installation of Ionising Radiation Protection facilities.  
The design, manufacture and installation of LED lighting systems for medical applications.  
EEP Filters Limited are registered to BS EN ISO 9001:2015, Certificate Number FS38901.  
Registered Scope: The design, manufacture, management of installation and testing of high performance EMC and EMP Power and Data Line Filters.

### Disclaimer

NB: All the information provided within this datasheet is for reference only. Product specifications are subject to change without notice.